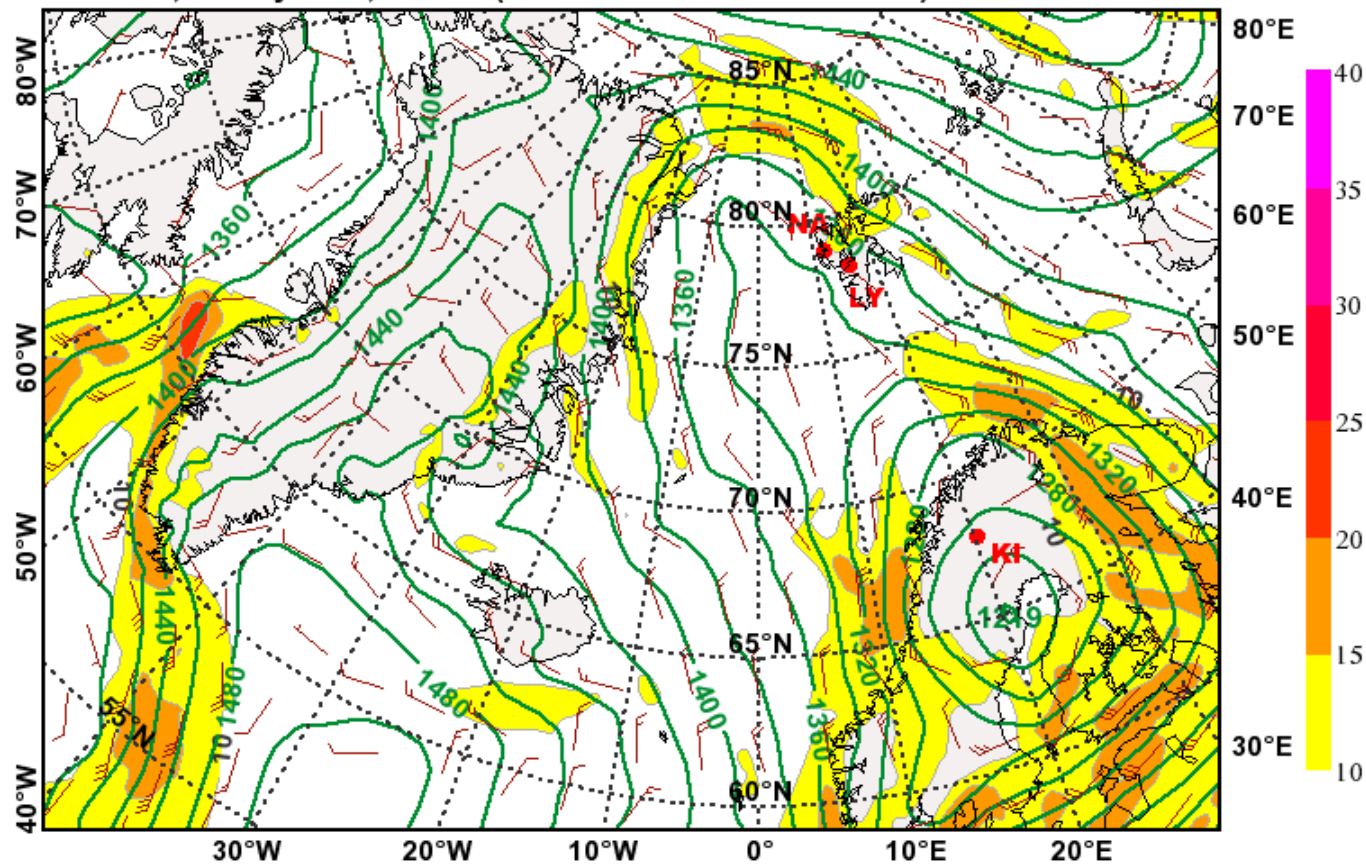
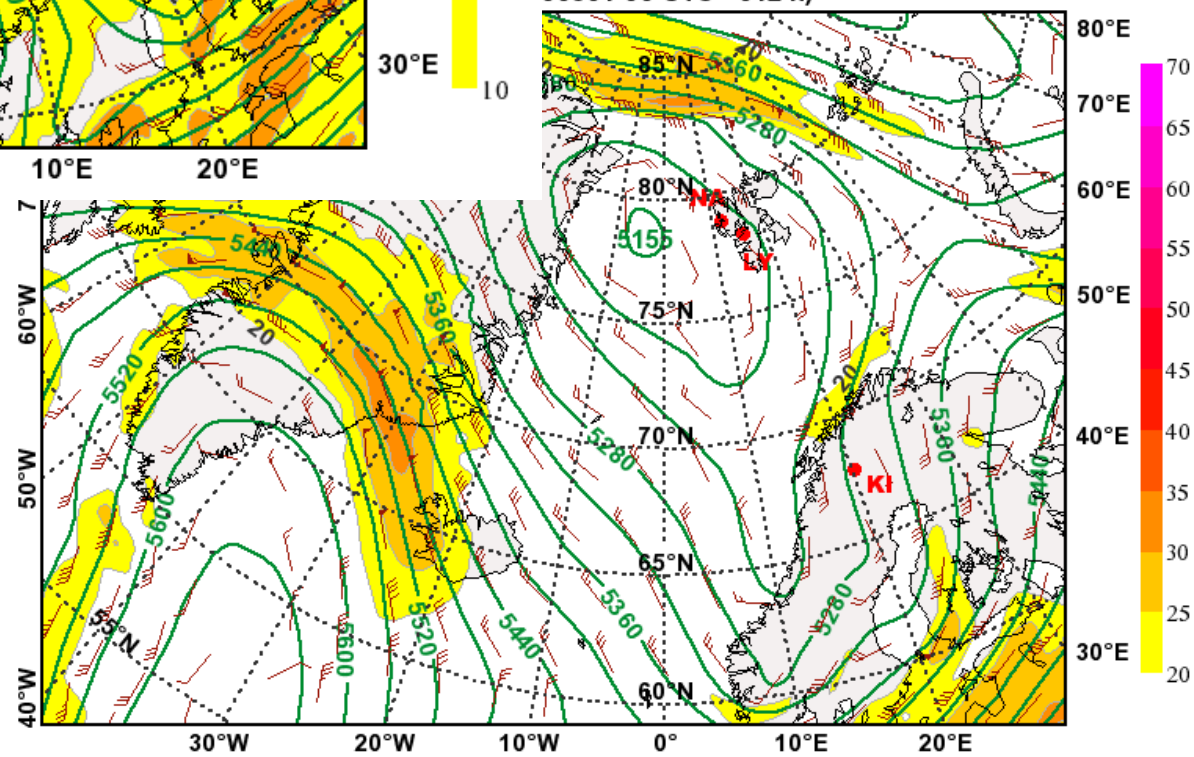


**Test flight :: Sat May 1, 2010**

**Geopotential Height (m) & Horizontal Wind (m/s) at 850hPa**  
 valid: Sat, 01 May 2010, 12 UTC (init: 20100501 00 UTC +012 h)

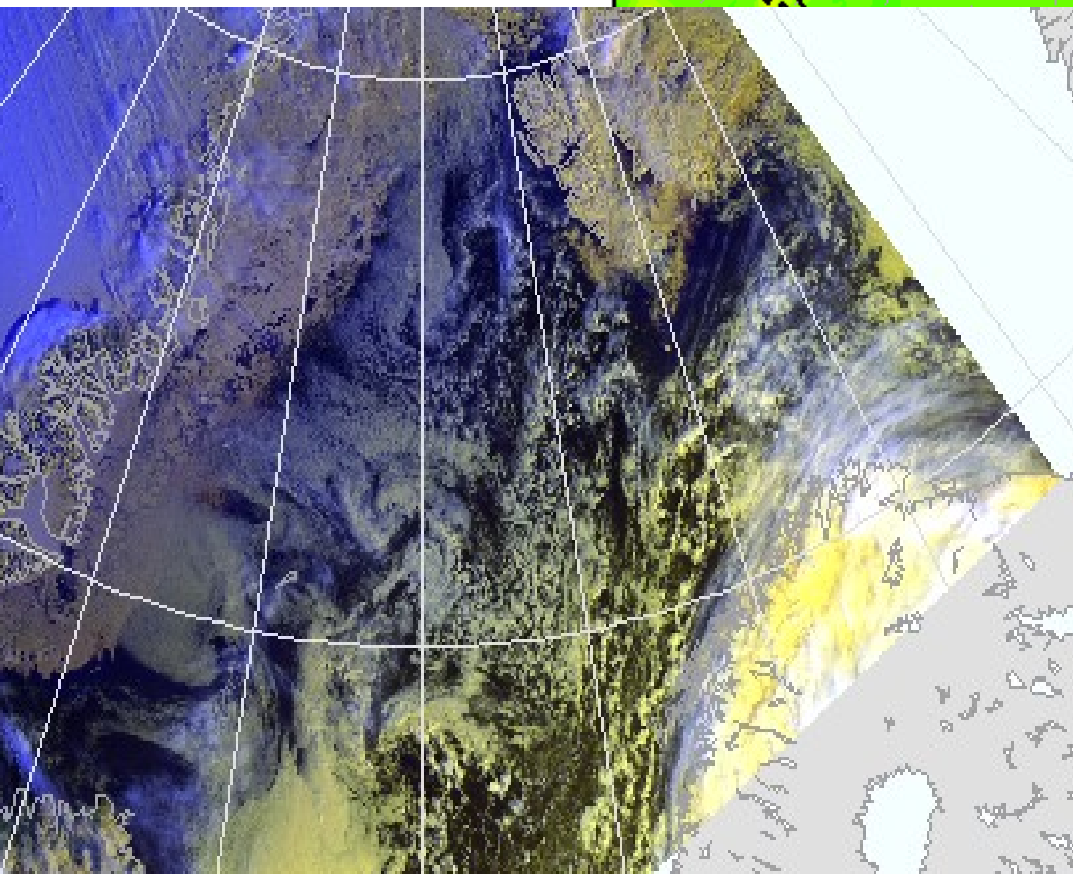
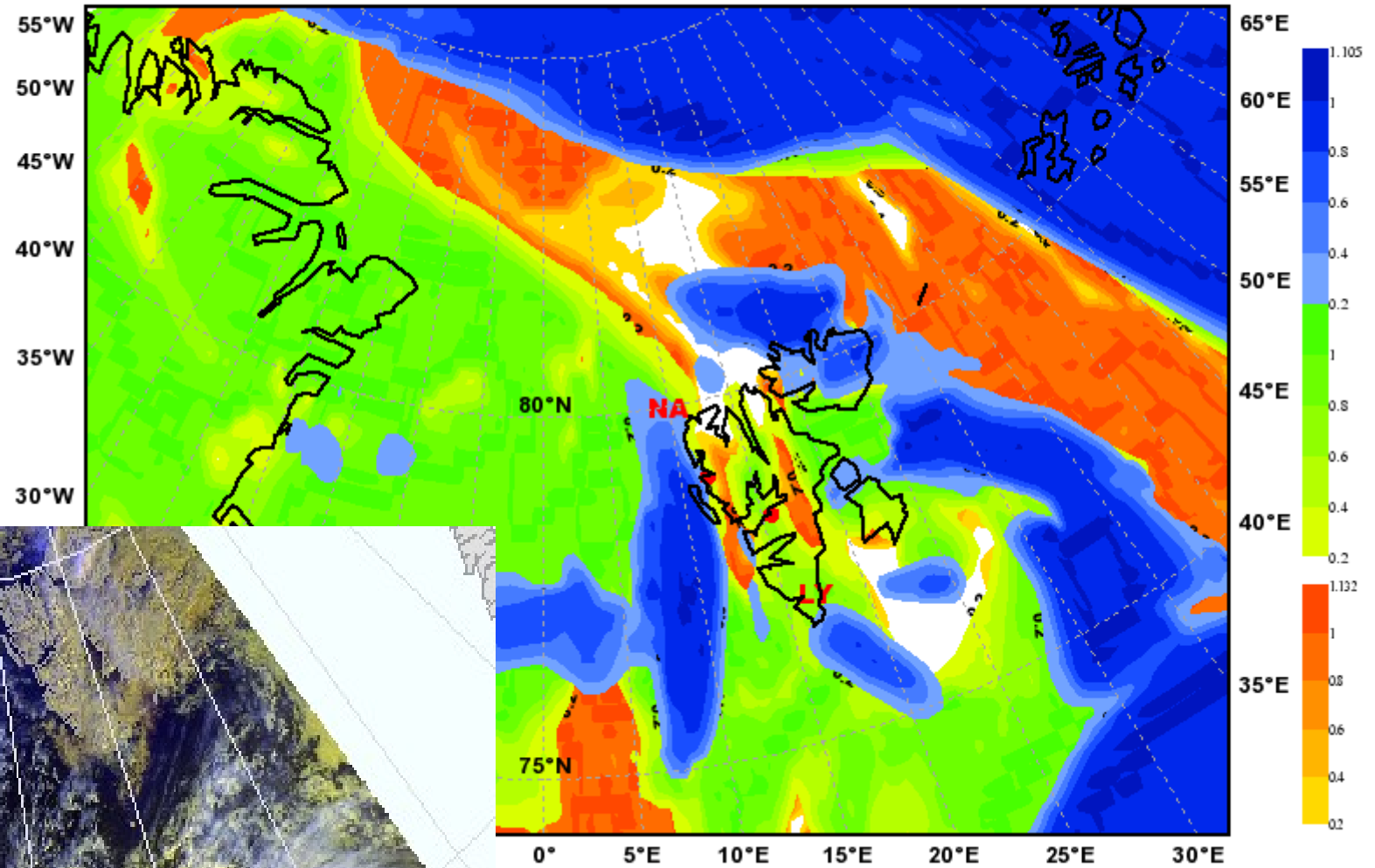


**nd (m/s) at 500hPa**  
 00501 00 UTC +012 h)



# Total Cloud Cover

valid: Sat, 01 May 2010, 09 UTC (init: 20100501 00 UTC +009 h)

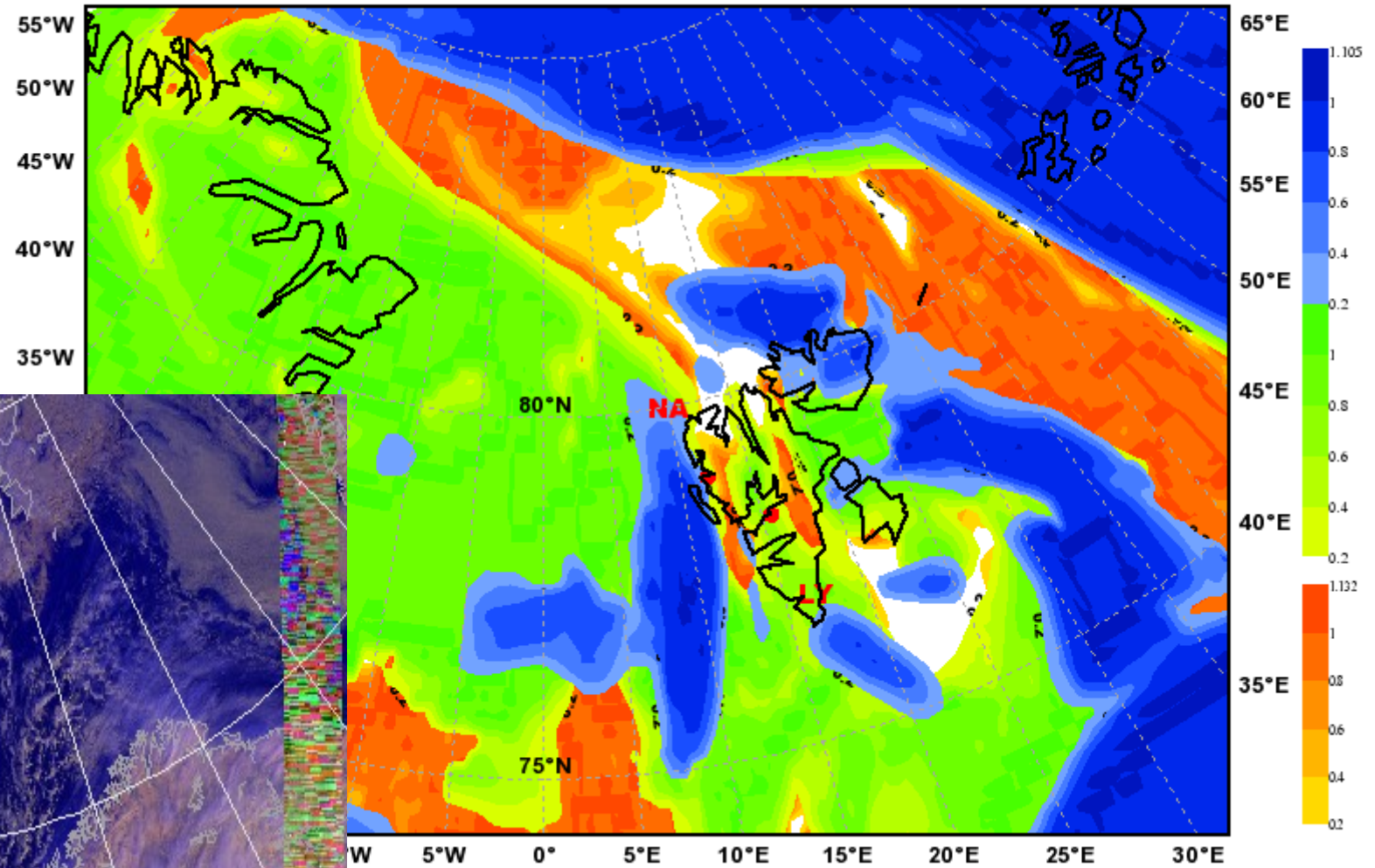


7:58 UTC



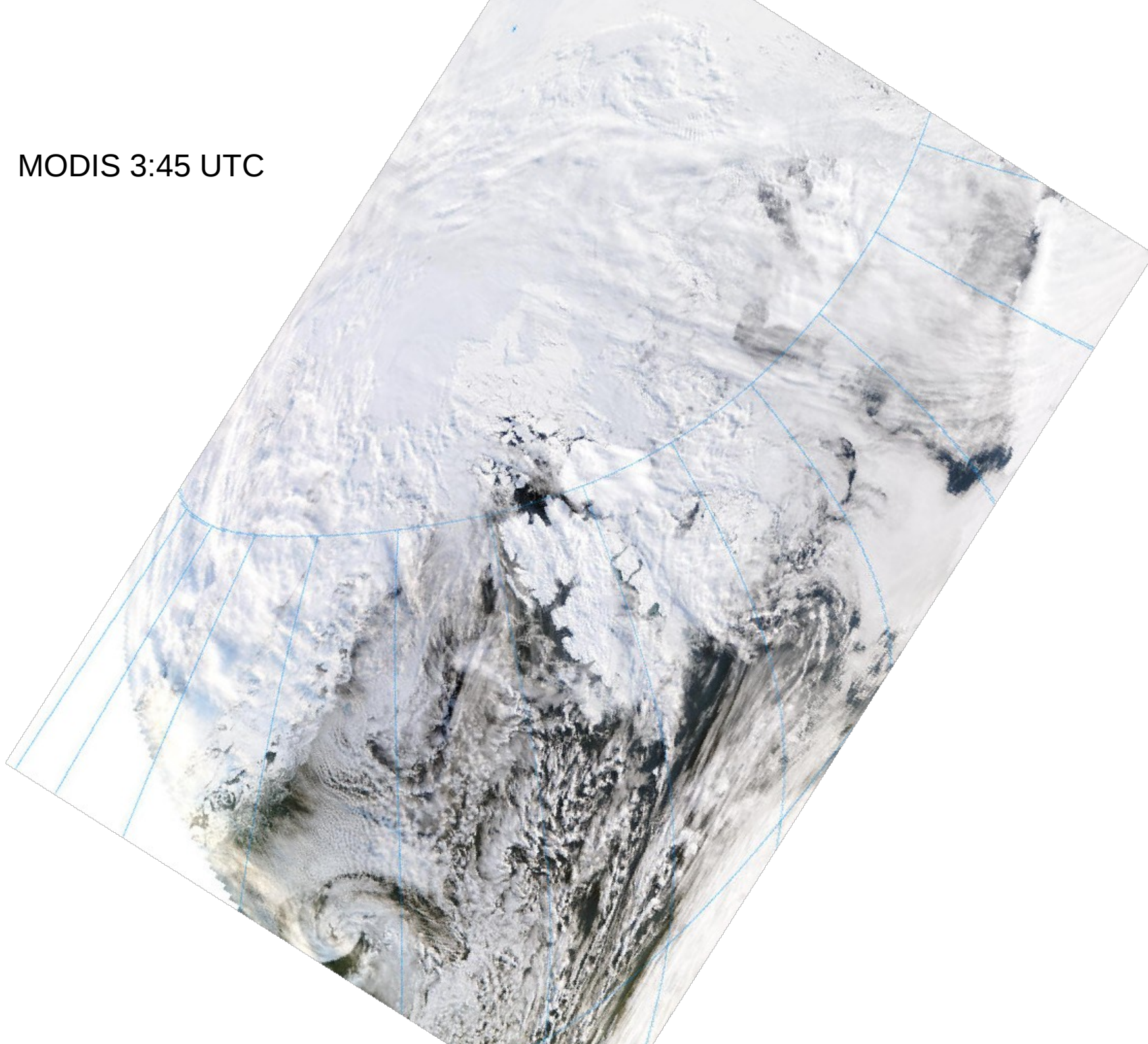
# Total Cloud Cover

valid: Sat, 01 May 2010, 09 UTC (init: 20100501 00 UTC +009 h)



8:45 UTC

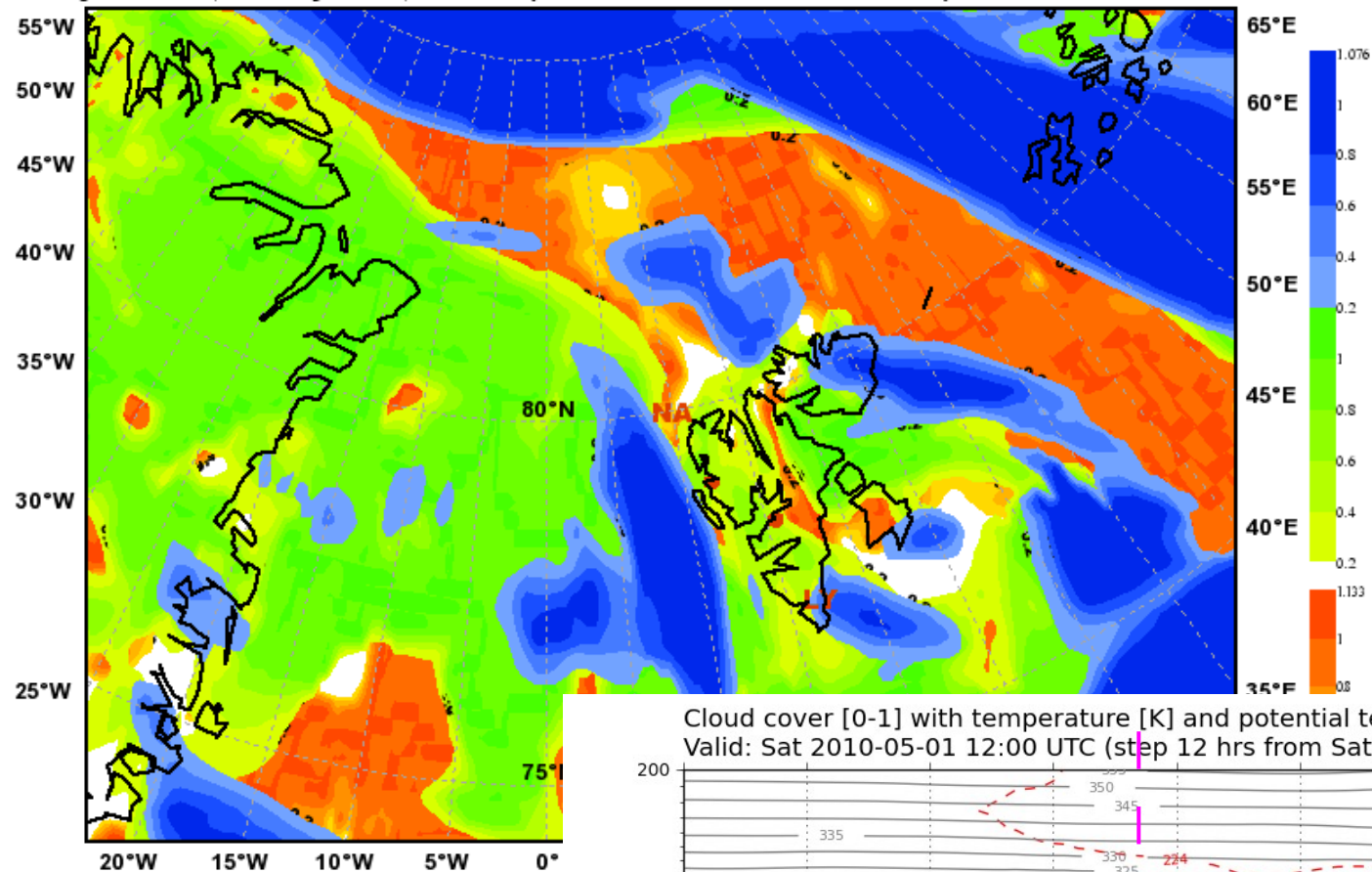
MODIS 3:45 UTC





# Total Cloud Cover

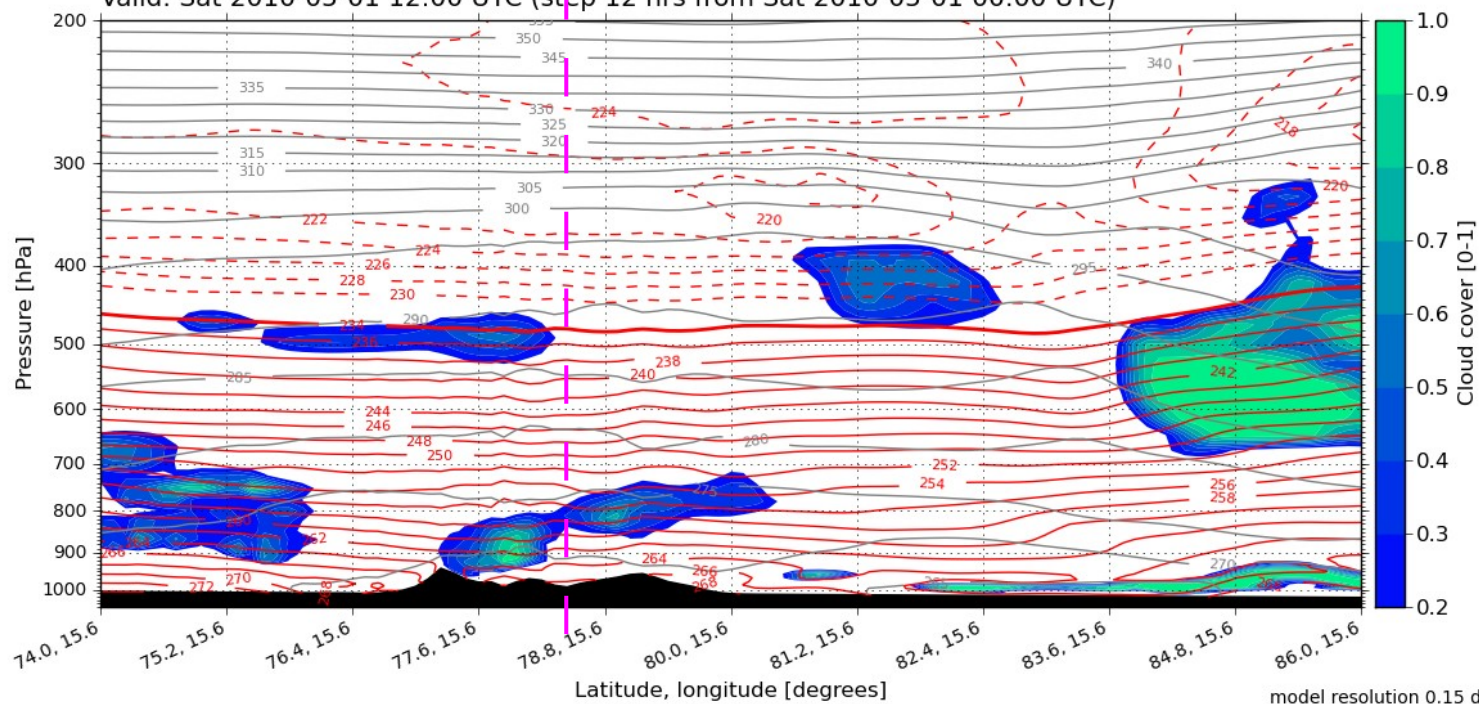
Valid: Sat, 01 May 2010, 12 UTC (init: 20100501 00 UTC +012 h)



N-S through LY

Cloud cover [0-1] with temperature [K] and potential temperature [K]

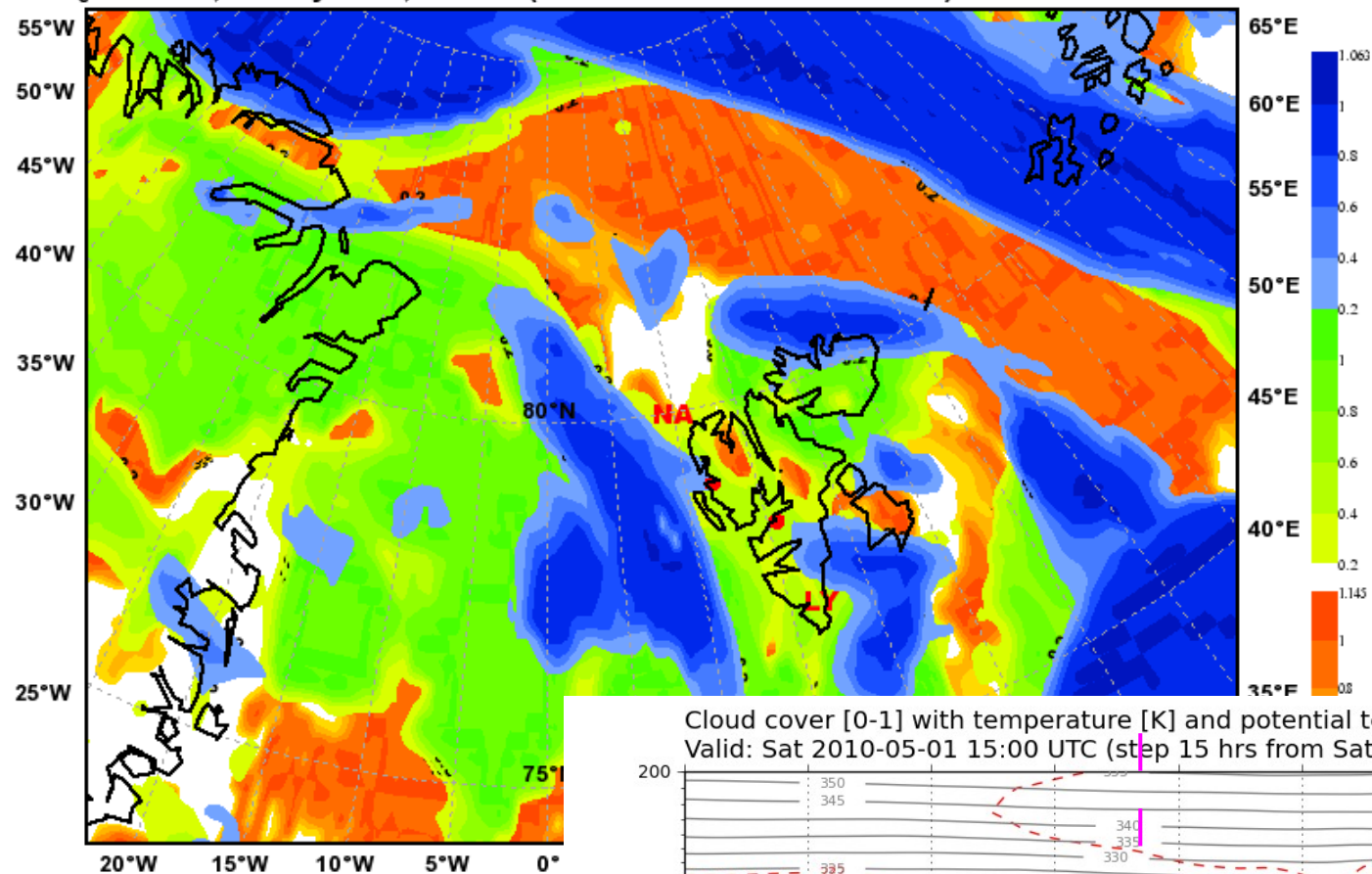
Valid: Sat 2010-05-01 12:00 UTC (step 12 hrs from Sat 2010-05-01 00:00 UTC)



model resolution 0.15 deg

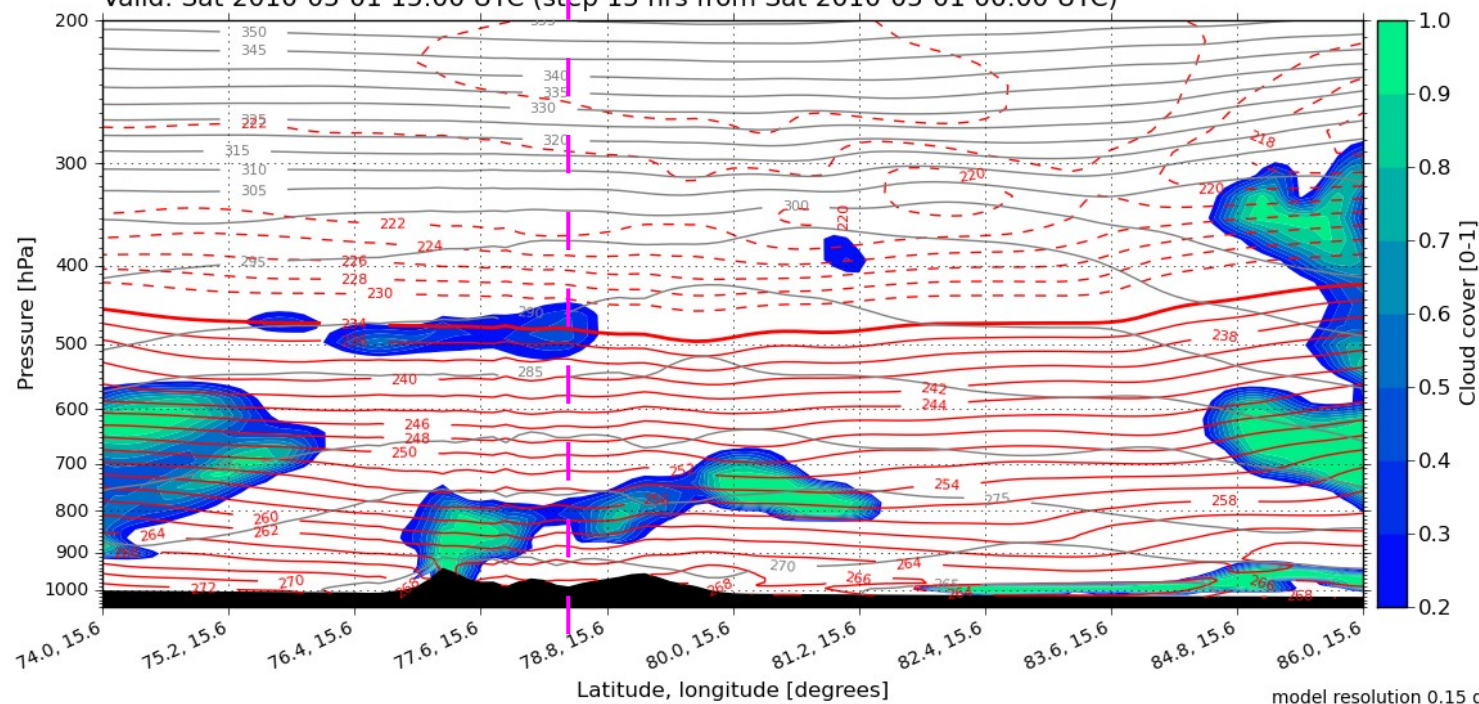
# Total Cloud Cover

valid: Sat, 01 May 2010, 15 UTC (init: 20100501 00 UTC +015 h)



N-S through LY

Cloud cover [0-1] with temperature [K] and potential temperature [K]  
Valid: Sat 2010-05-01 15:00 UTC (step 15 hrs from Sat 2010-05-01 00:00 UTC)

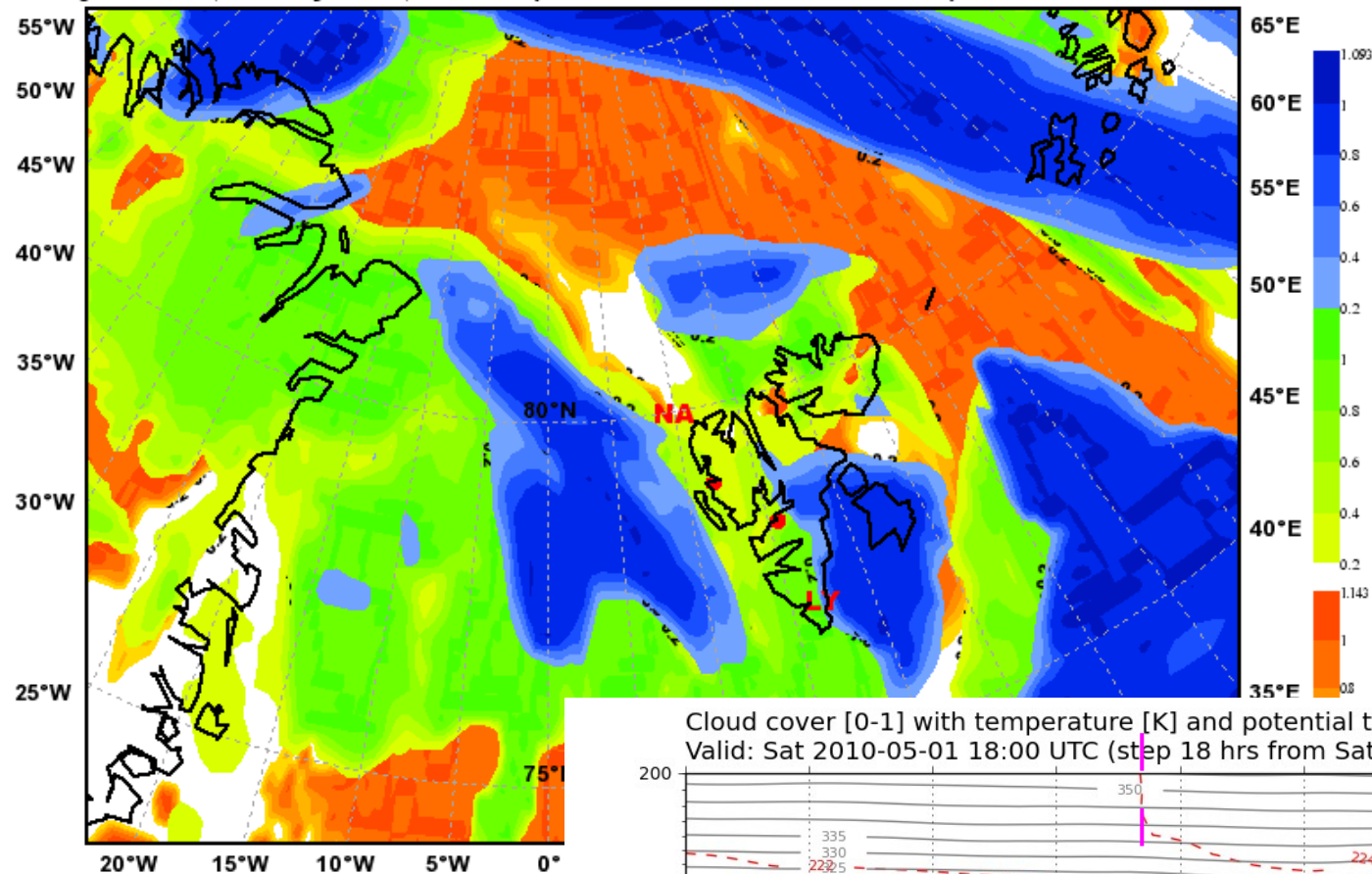


model resolution 0.15 deg

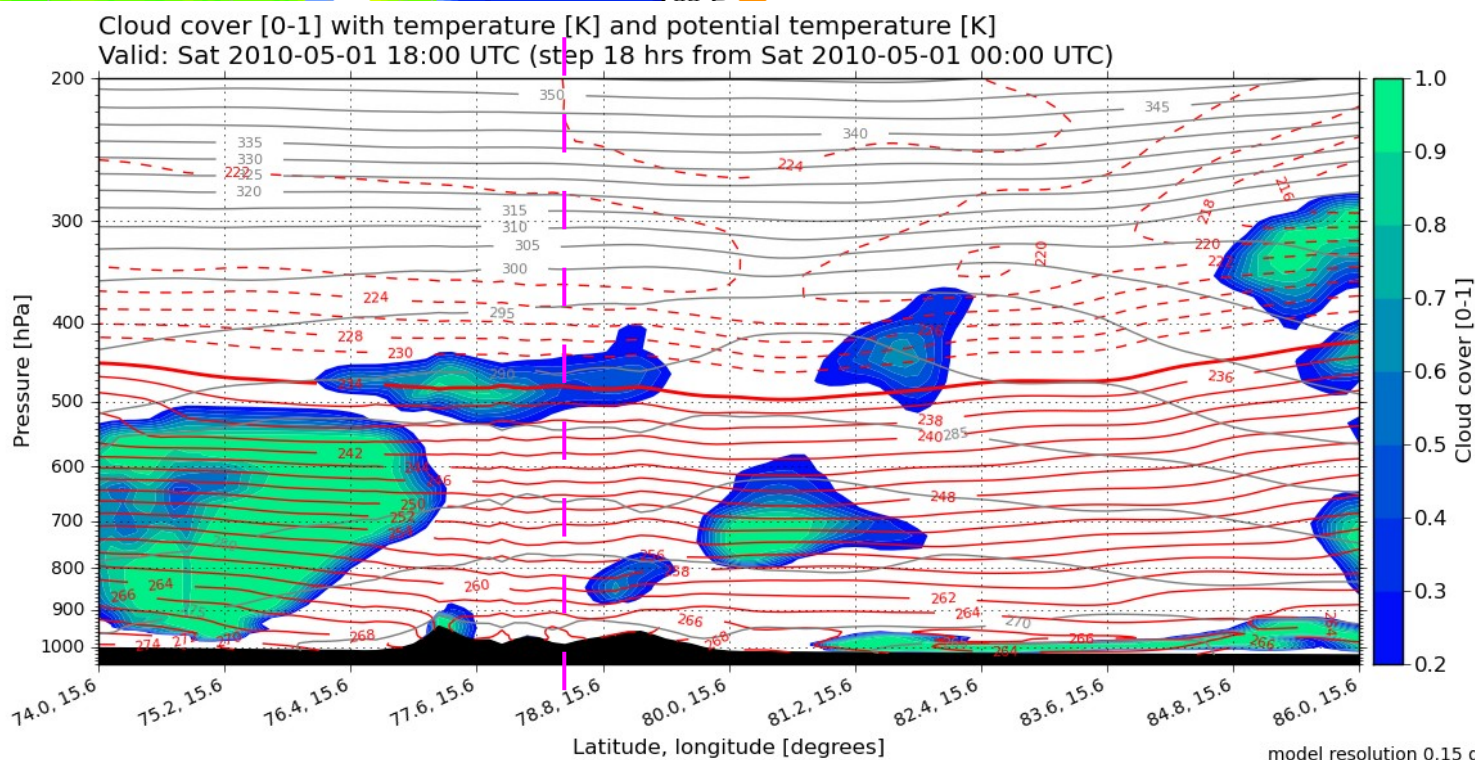


# Total Cloud Cover

valid: Sat, 01 May 2010, 18 UTC (init: 20100501 00 UTC +018 h)



N-S through LY

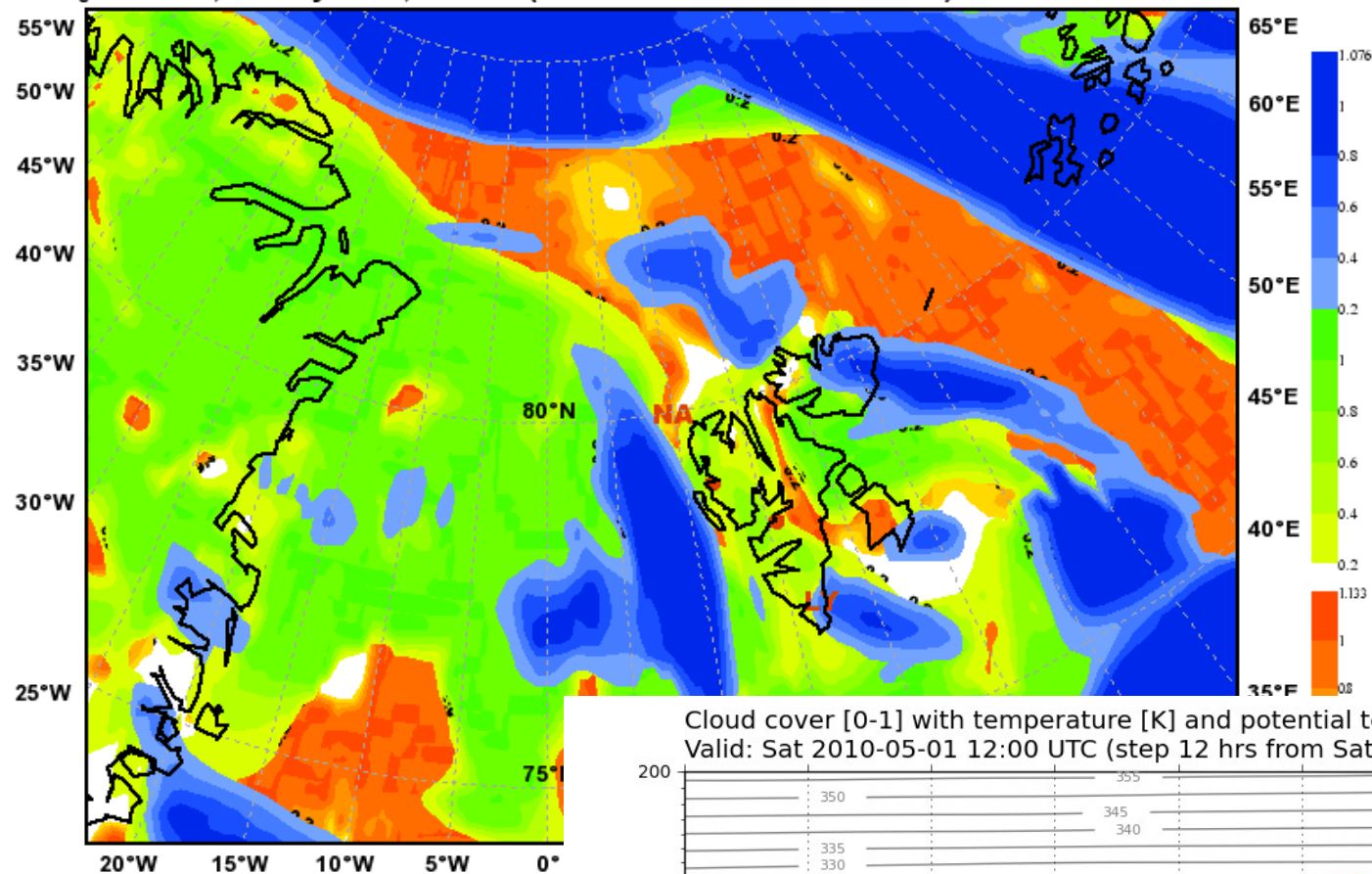


model resolution 0.15 deg



# Total Cloud Cover

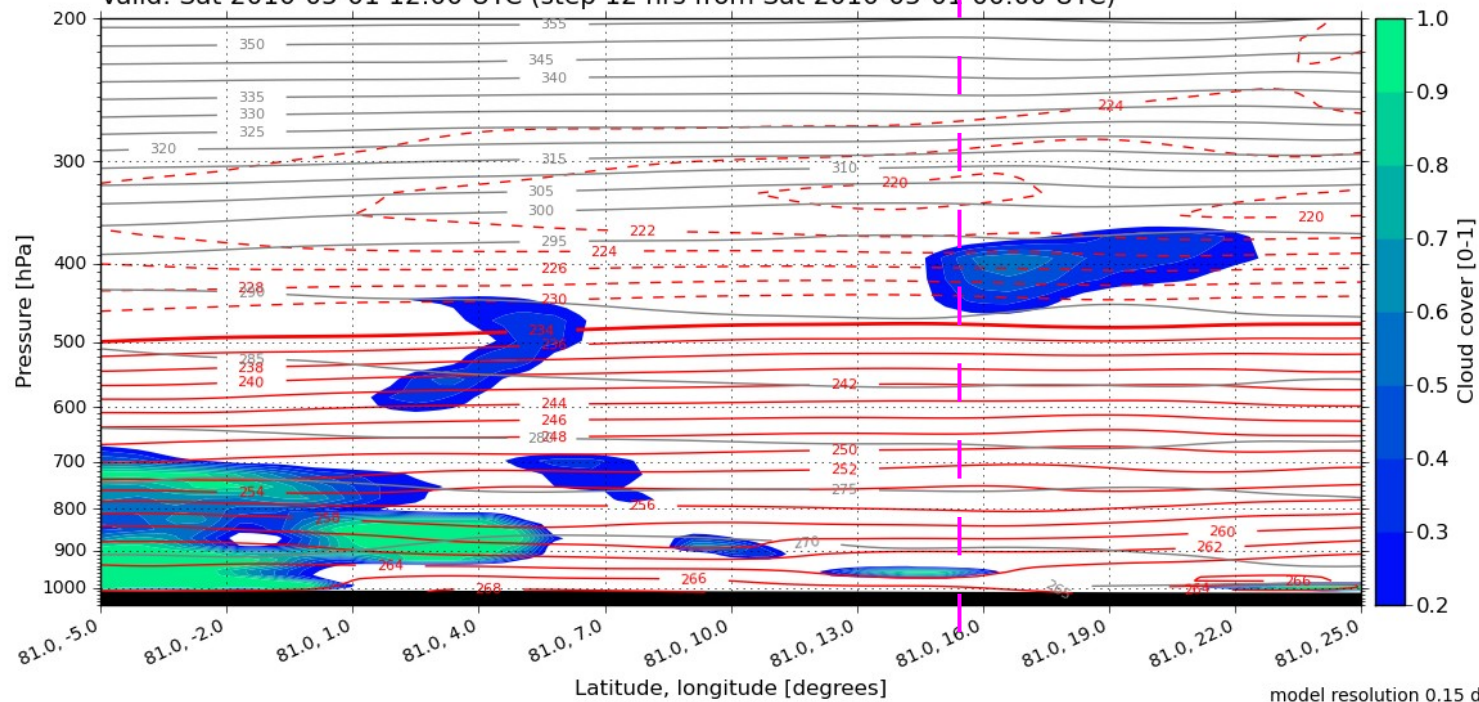
Valid: Sat, 01 May 2010, 12 UTC (init: 20100501 00 UTC +012 h)



E-W along 81N

Cloud cover [0-1] with temperature [K] and potential temperature [K]

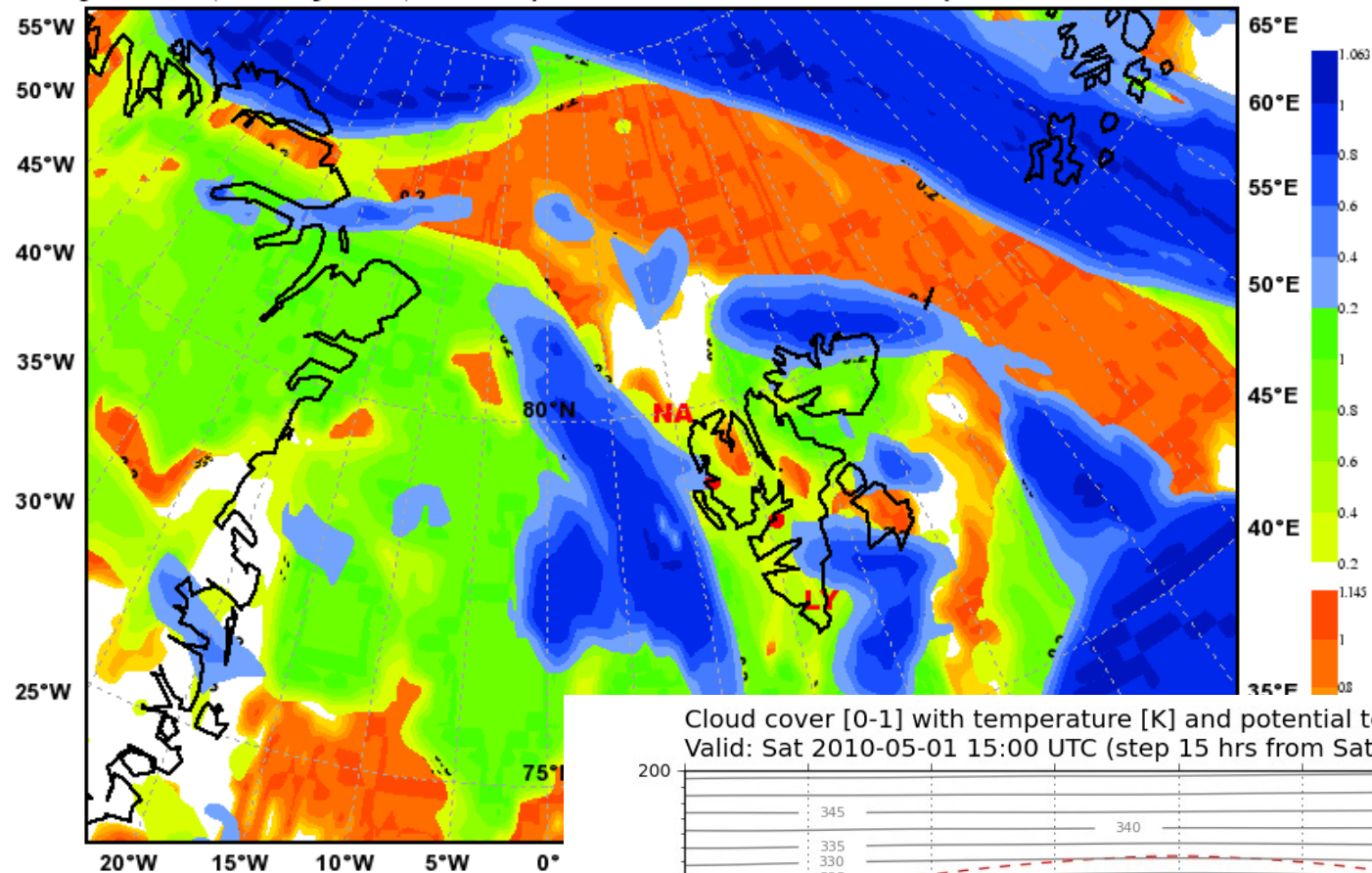
Valid: Sat 2010-05-01 12:00 UTC (step 12 hrs from Sat 2010-05-01 00:00 UTC)



model resolution 0.15 deg

# Total Cloud Cover

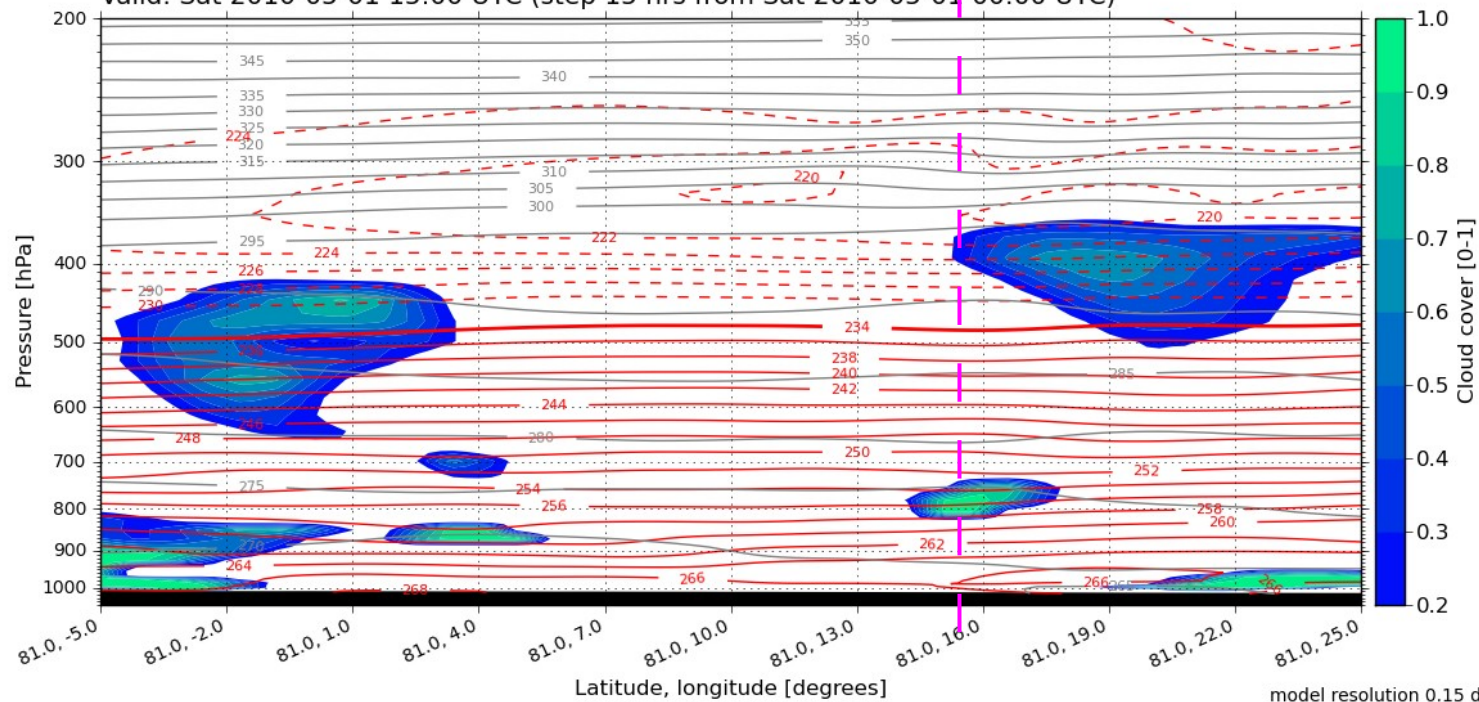
Valid: Sat, 01 May 2010, 15 UTC (init: 20100501 00 UTC +015 h)



E-W along 81N

Cloud cover [0-1] with temperature [K] and potential temperature [K]

Valid: Sat 2010-05-01 15:00 UTC (step 15 hrs from Sat 2010-05-01 00:00 UTC)

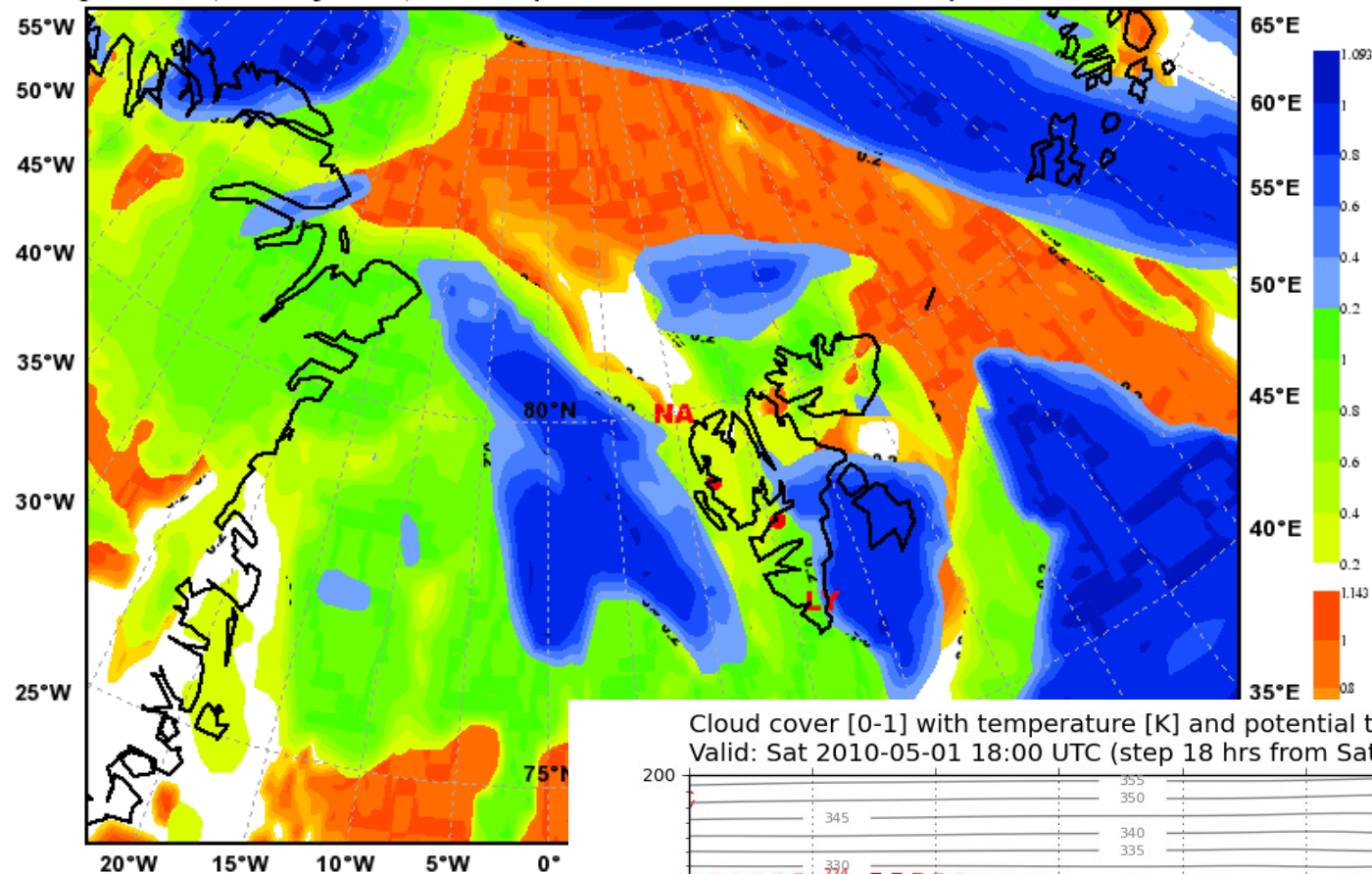


model resolution 0.15 deg



# Total Cloud Cover

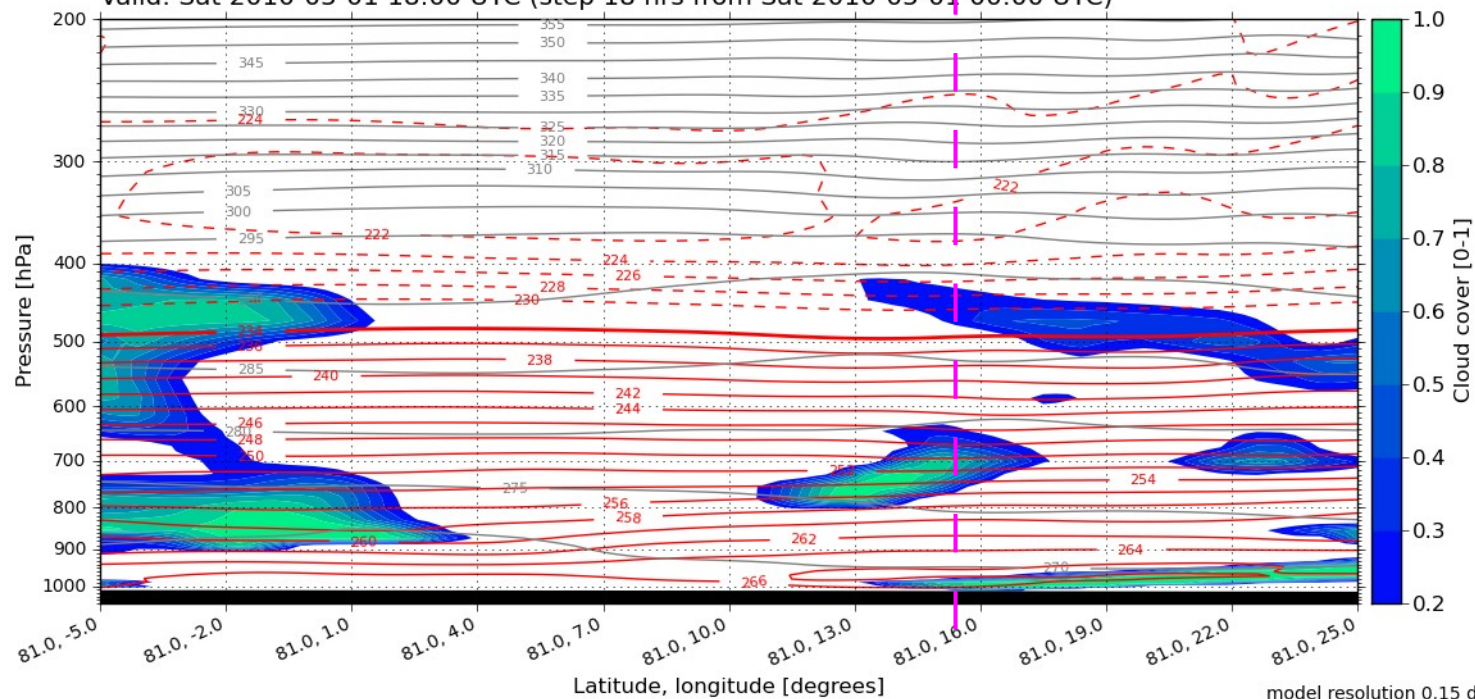
Valid: Sat, 01 May 2010, 18 UTC (init: 20100501 00 UTC +018 h)



E-W along 81N

Cloud cover [0-1] with temperature [K] and potential temperature [K]

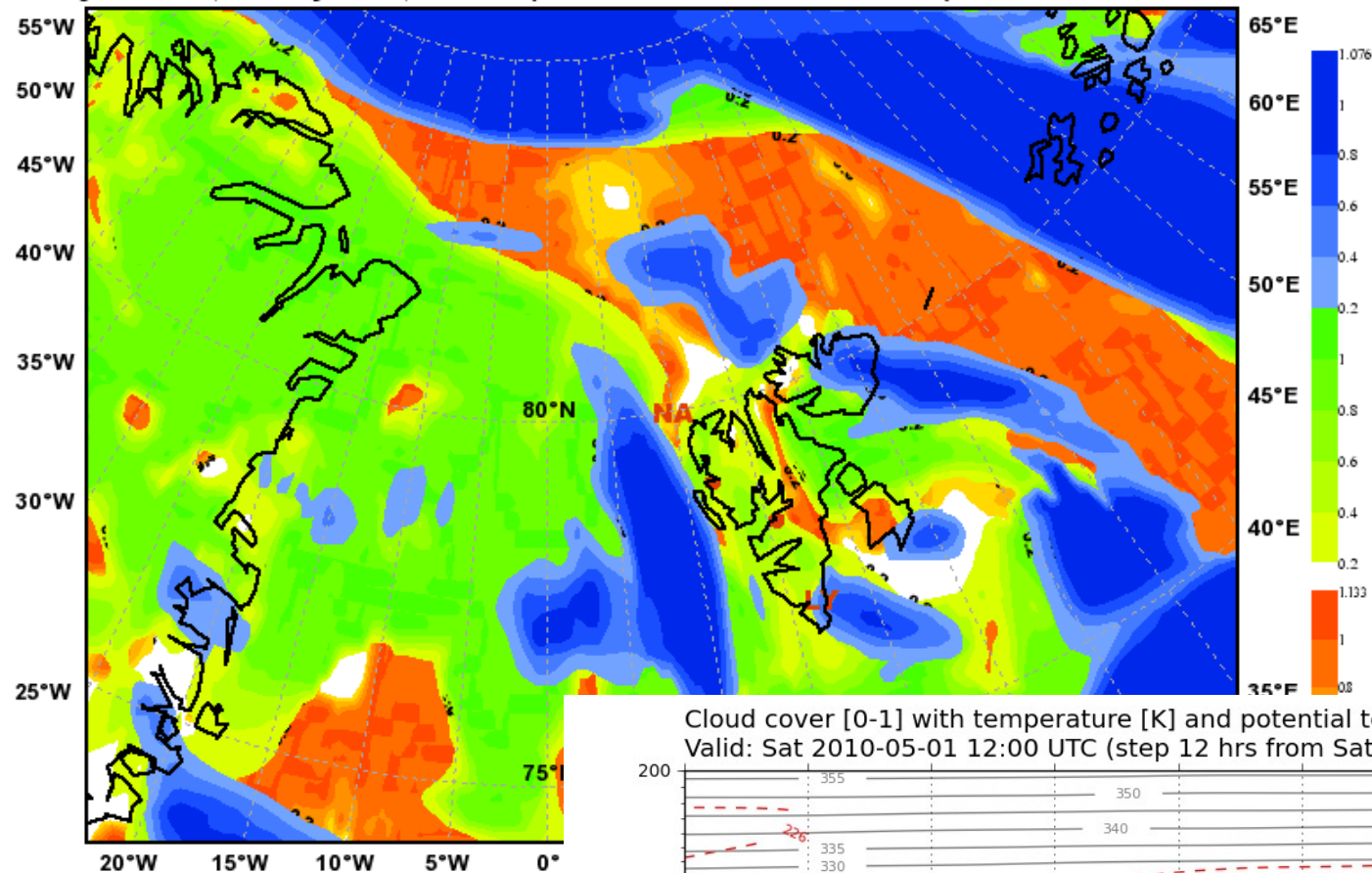
Valid: Sat 2010-05-01 18:00 UTC (step 18 hrs from Sat 2010-05-01 00:00 UTC)



model resolution 0.15 deg

# Total Cloud Cover

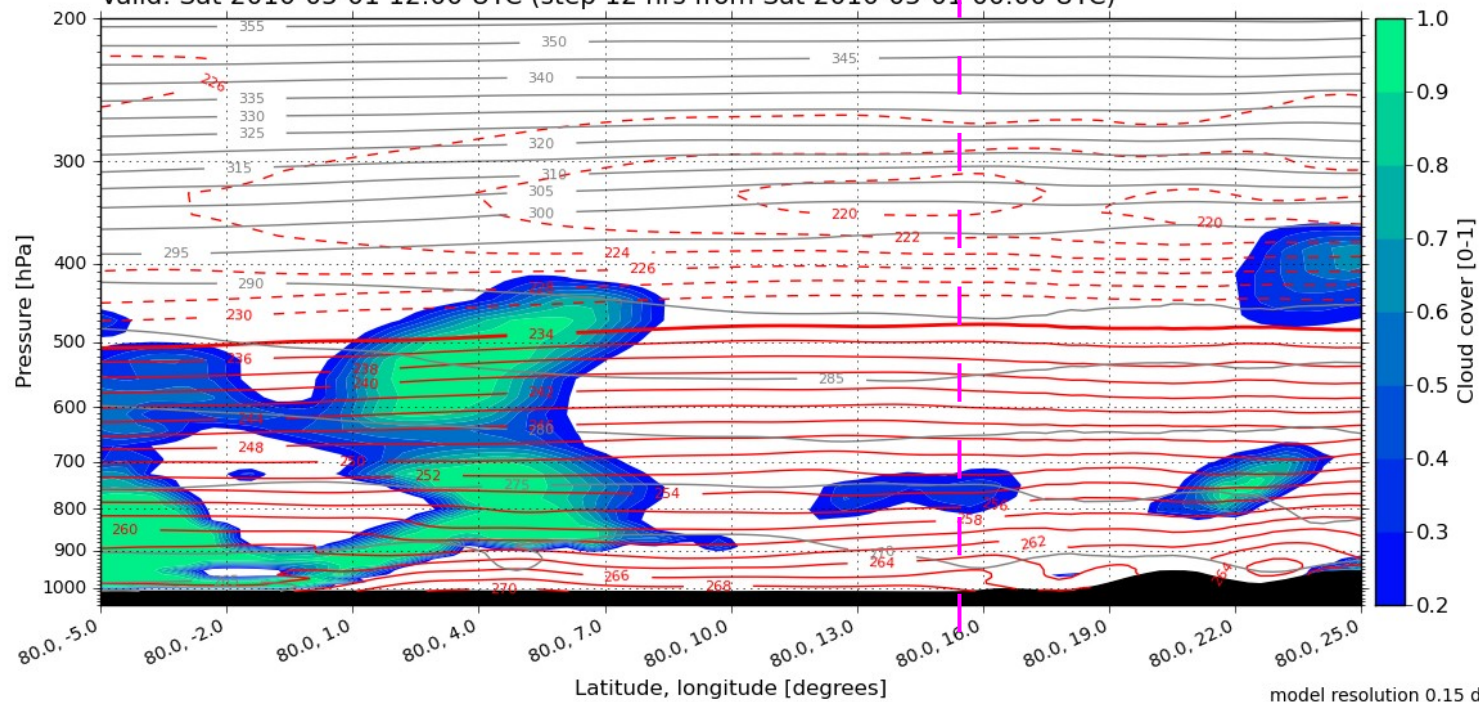
Valid: Sat, 01 May 2010, 12 UTC (init: 20100501 00 UTC +012 h)



E-W along 80N

Cloud cover [0-1] with temperature [K] and potential temperature [K]

Valid: Sat 2010-05-01 12:00 UTC (step 12 hrs from Sat 2010-05-01 00:00 UTC)

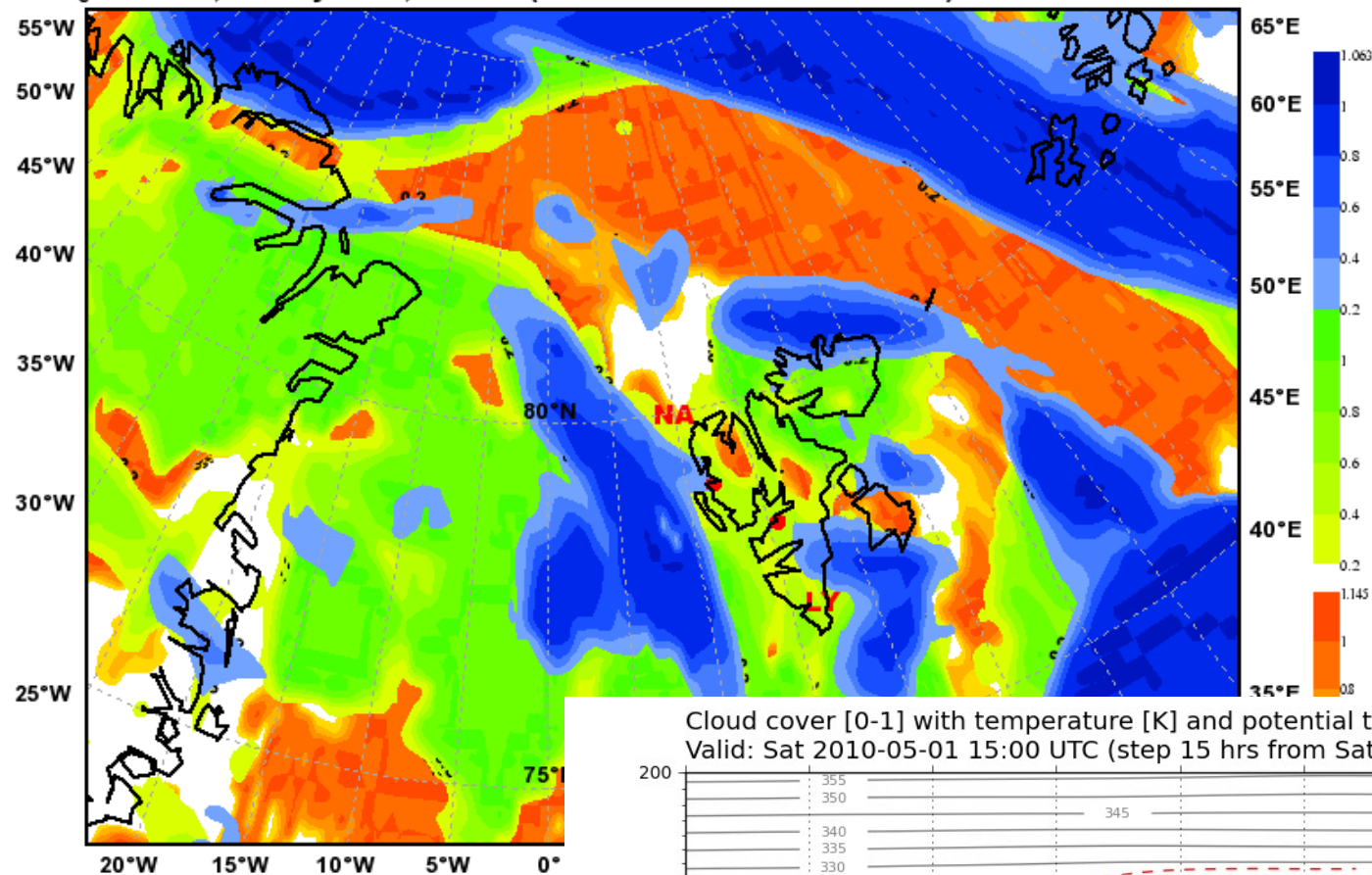


model resolution 0.15 deg



# Total Cloud Cover

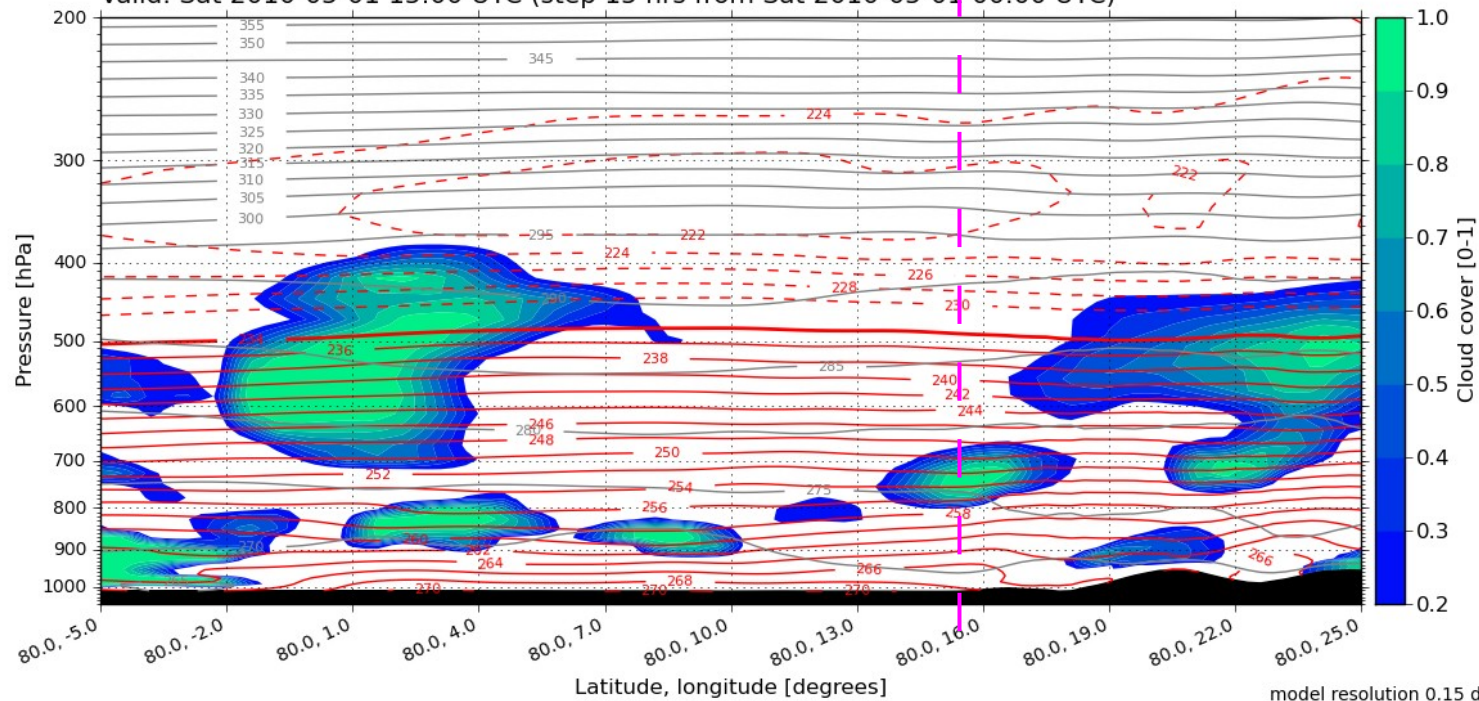
Valid: Sat, 01 May 2010, 15 UTC (init: 20100501 00 UTC +015 h)



E-W along 80N

Cloud cover [0-1] with temperature [K] and potential temperature [K]

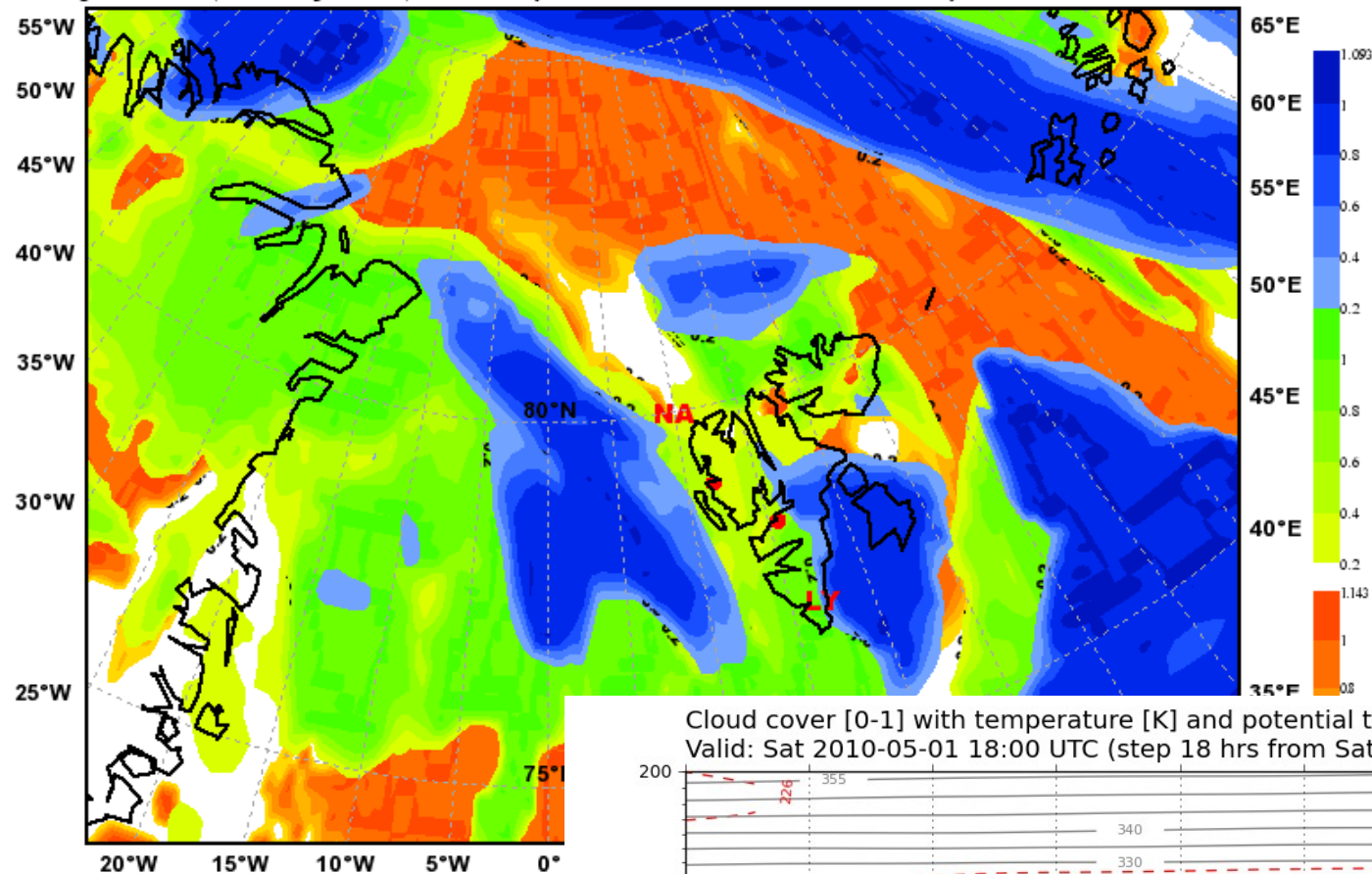
Valid: Sat 2010-05-01 15:00 UTC (step 15 hrs from Sat 2010-05-01 00:00 UTC)



model resolution 0.15 deg

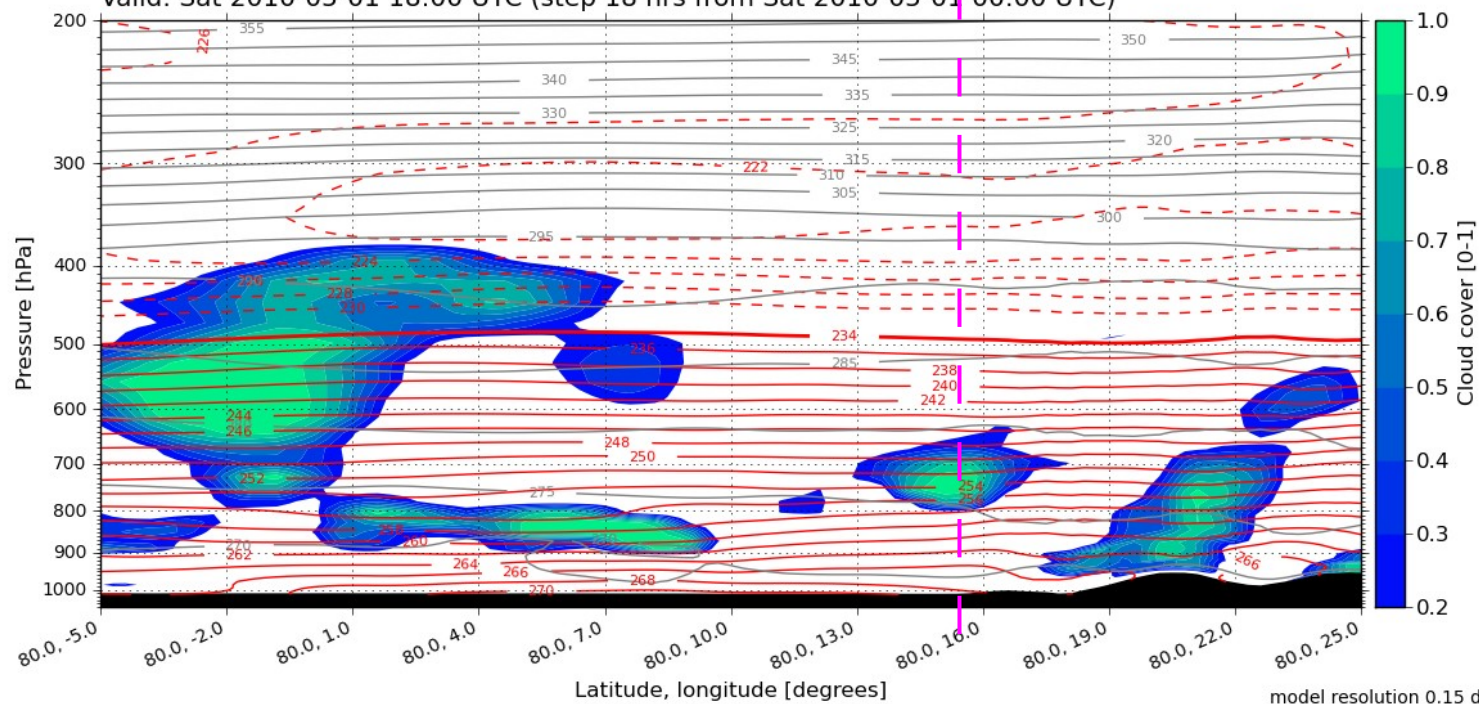
# Total Cloud Cover

Valid: Sat, 01 May 2010, 18 UTC (init: 20100501 00 UTC +018 h)



E-W along 80N

Cloud cover [0-1] with temperature [K] and potential temperature [K]  
Valid: Sat 2010-05-01 18:00 UTC (step 18 hrs from Sat 2010-05-01 00:00 UTC)



model resolution 0.15 deg